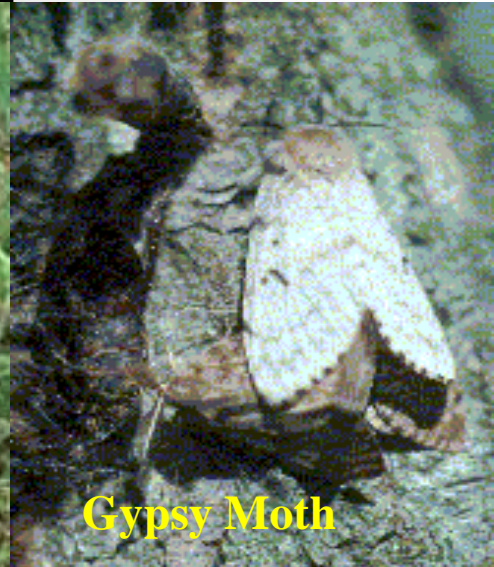
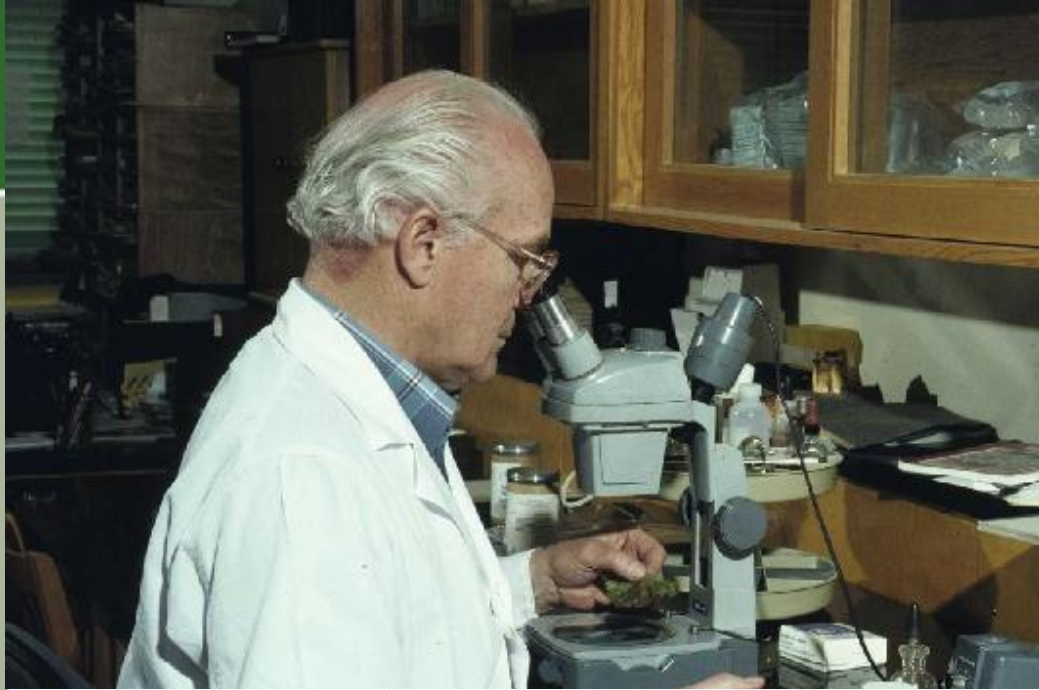


INVASIVE PESTS, AN OLD ISSUE







ONNR E. Czerwinski

Emerald Ash Borer
(Agrilus Planipennis)



CFS W. Biggs

Asian Longhorned Beetle
Anoplophora glabripennis



Sirex Woodwasp



(Sirex noctilio)



Integrated Pest management Division



- Pest Ecology: 5 entomologists, 1 chemist, 1 biologist, 7 technicians.
2 new RES to join in 10/11
- Insect Biotechnology: 3 scientists, 1 biologist, 4 technicians
PDFs (U of Guelph)
- IPU/Quarantine 1 manager, 1 biologist, 4 technicians
Interns and casuals
- Microbial Control 4 entomologists, 1 pathologist 4 technicians
- Greenhouse support 1 technician
- Insect/fungal diagnostics 1 biologist/ 2 technicians





Acknowledgements



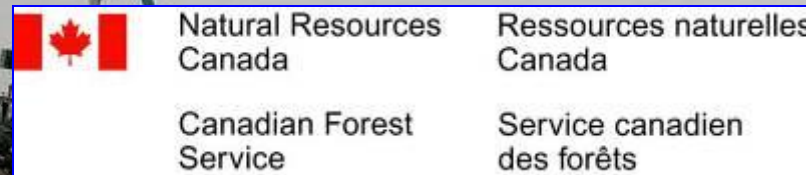
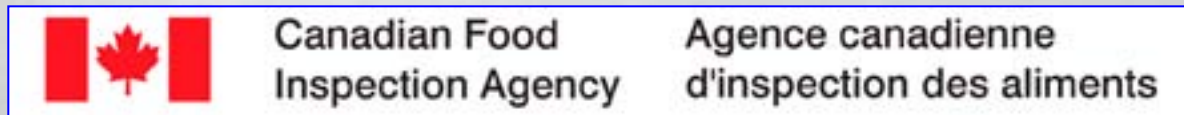
Emerald Ash Borer
Within-Tree Distribution Project Team
March 2006



Emerald Ash Borer
Within-Tree Distribution Project Team
April 2006



Eradication of Asian Longhorned Beetle



Sirex noctilio



Sirex symposium South Africa 2007

Research

- Early detection and survey methods
- Biological control methods
- Economic and ecological impact
- Insect, fungi, and plant interactions

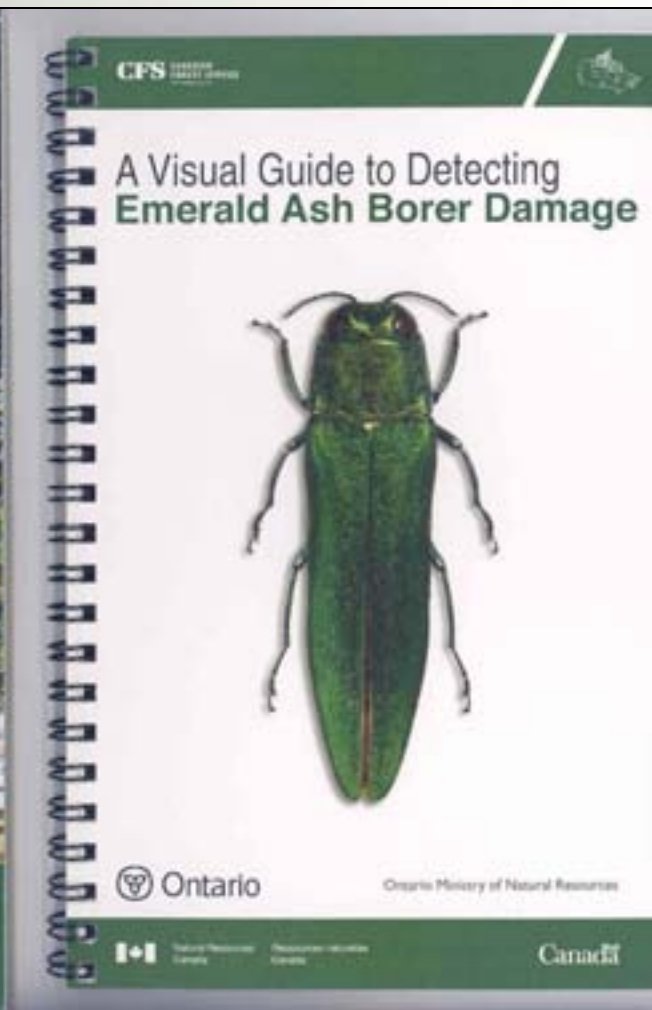
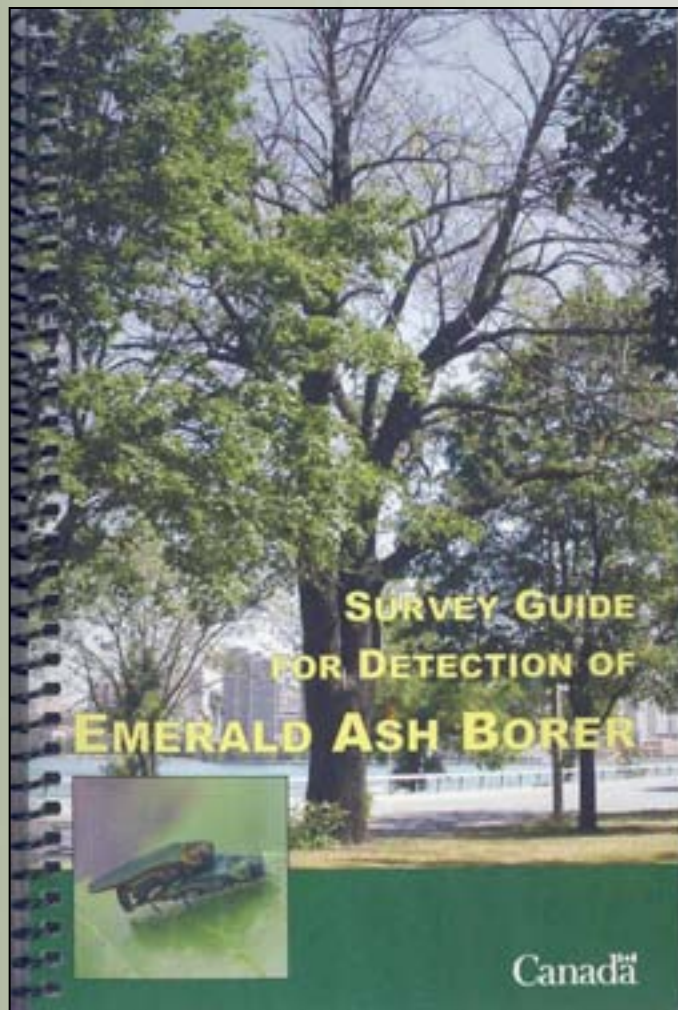
Policy and Information

- Science advisory panels (Canada & USA)
- Scientific support, technology transfer and advice to NRCan, CFIA, APHIS & provinces
- Numerous presentations, workshops, and several publications, including book (in prep)

National and International Collaboration

- USFS & CFS
- Ontario and Quebec Natural Resources
- Universities: Toronto, Simon Fraser, Pretoria, Louisiana





Natural Resources
Canada

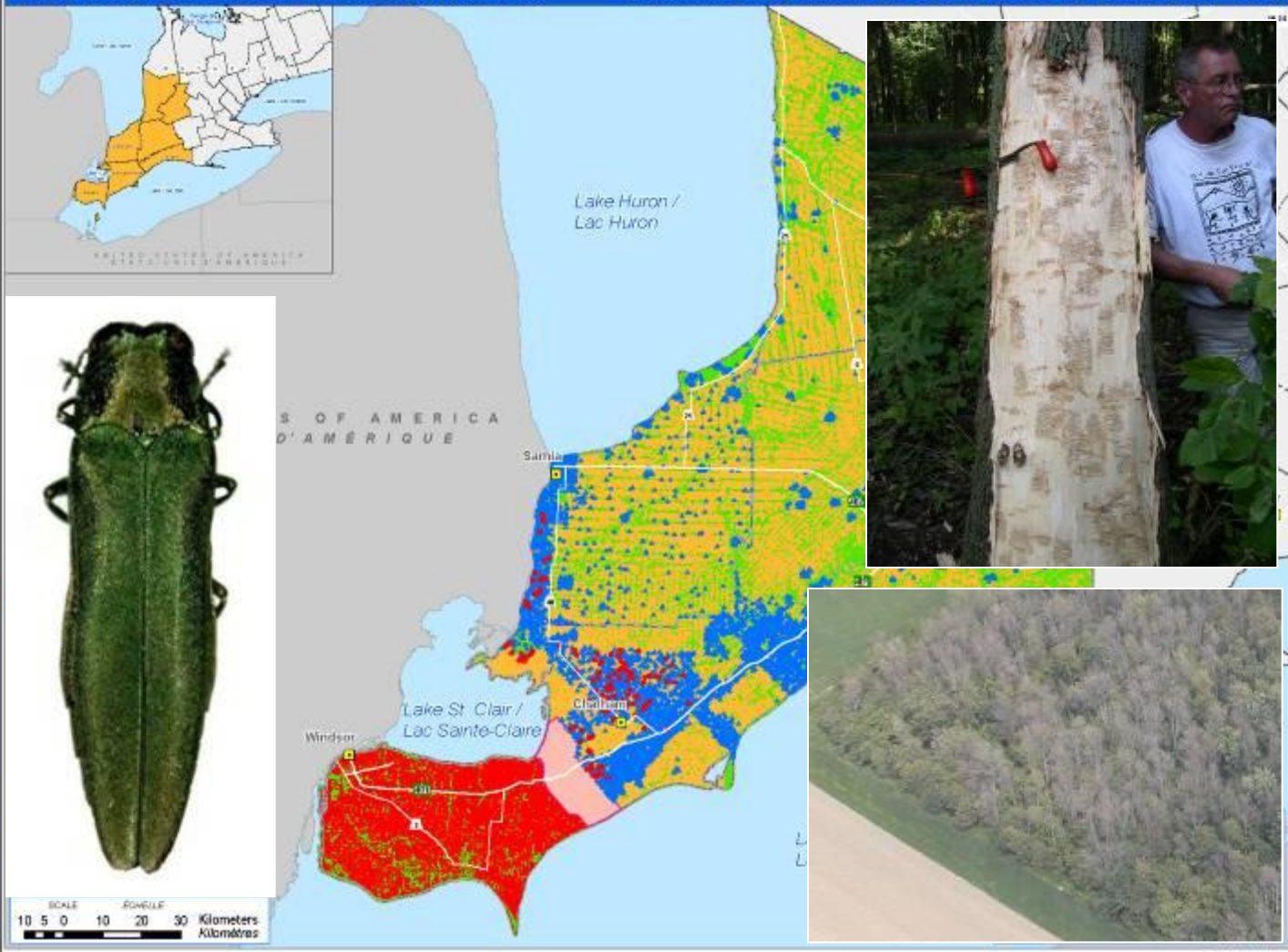
Ressources naturelles
Canada

Canada



EMERALD ASH BORER SURVEY RESULTS (2005 - 2006)

RÉSULTATS DES ENQUÊTES SUR L'AGRILE DU FRÊNE (2005 - 2006)





Investigating Biology,
Behaviour and Phenology



Natural Resources
Canada

Ressources naturelles
Canada

Canada

Investigating Trapping and Monitoring Systems

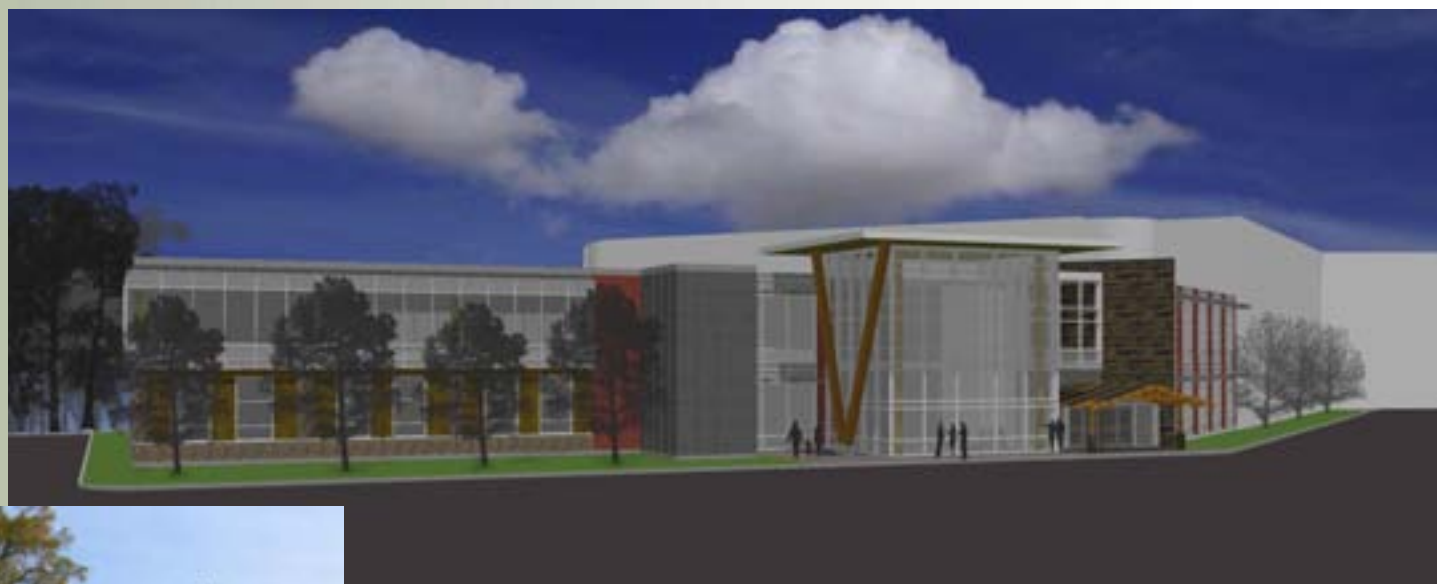




Exploring Control Strategies



Invasive Species Centre



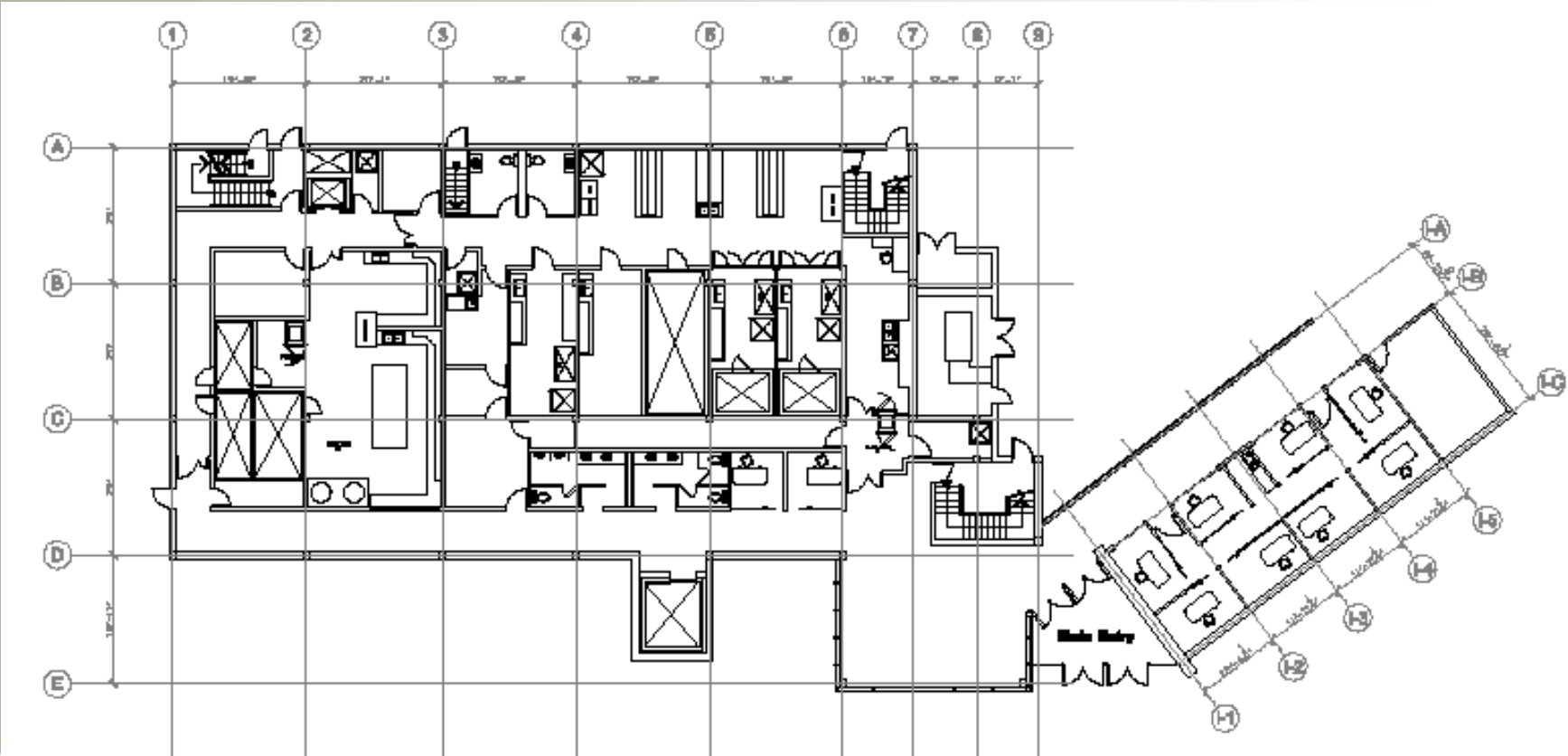
Natural Resources
Canada

Ressources naturelles
Canada

Canada

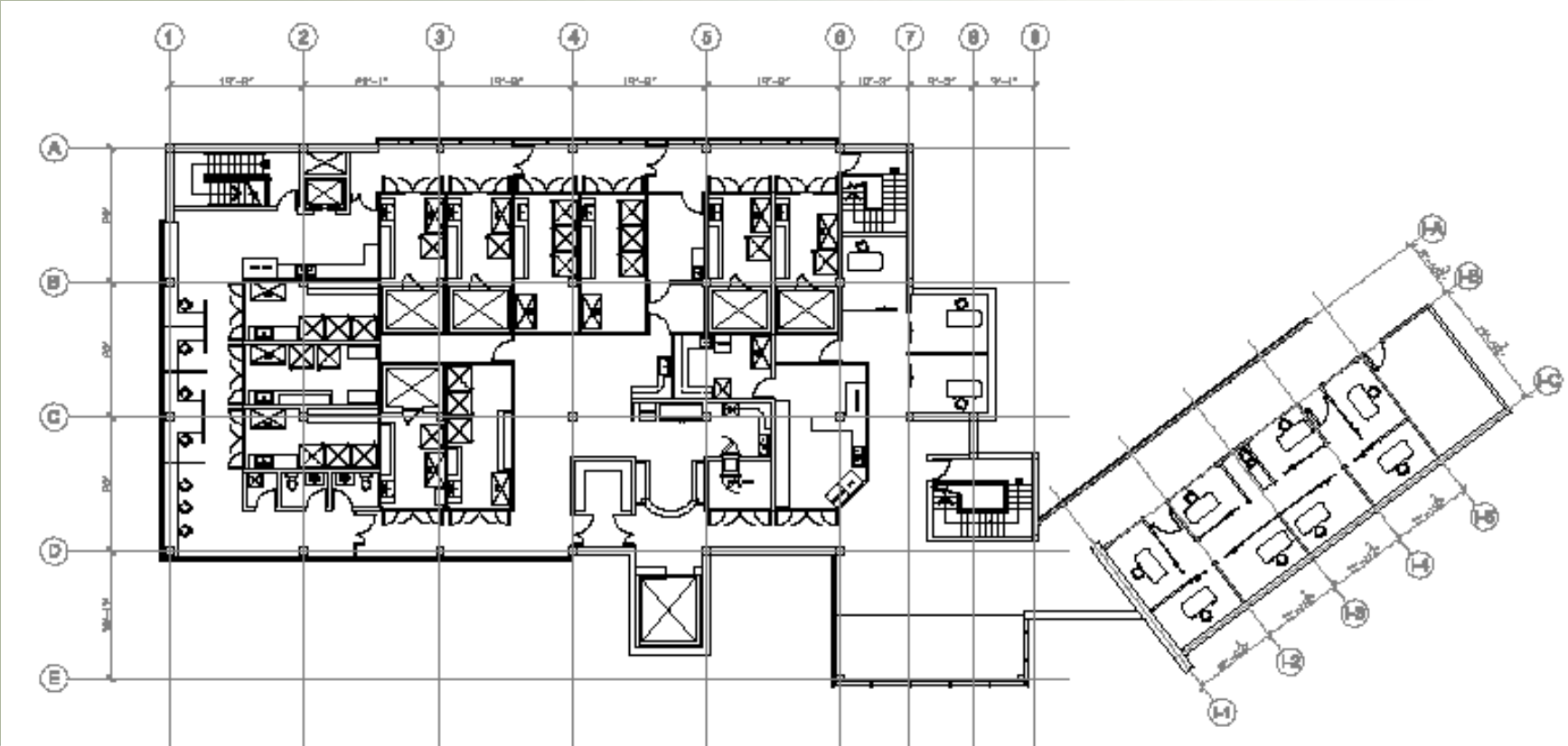


Level 1





Level 2





Offices and Common Areas





Space Allocation

	Current Facility (ft ²)	ISC (ft ²)
Domestic Species Rearing	5370	7120 (future reduction to 5400)
Invasive Species Rearing	1300	2958 (future expansion to 4678)
Quality Control	630	447
Common Areas	-	3810
MNR Offices	-	2800
TOTAL	7300	17135

