

*Natural. Valued. Protected.*

# Upper Great Lakes Invasive Species Discussions

Algoma University, Sault Ste. Marie  
November 5, 2009

Albert D. King  
Coordinator, Special Programs  
Ontario Ministry of Natural  
Resources  
al.king@ontario.ca

*Natural. Valued. Protected.*

“ A Partnership—to facilitate and improve coordination, collaboration, efficiencies and decision making in invasive species prevention, management, research, training, education and information management”

*Source: Invasive Species Centre “Framework Document”, 2009*

*Natural. Valued. Protected.*

***Invasive species are species that by human action have been taken outside their range of natural dispersal and in their new surroundings have become a threat against native organisms and/or ecosystems***



*Natural. Valued. Protected.*

## BACKGROUND

- ❖ The Invasive Species Centre (ISC) concept was developed following the Ontario discoveries of Emerald ash borer and Asian long-horned beetle in 2002-2003
- ❖ Concept explored by a committee comprised of the City of Sault Ste. Marie, MNR, Canadian Food Inspection Agency (CFIA), Canadian Forest Service (CFS) and Fisheries and Oceans Canada (DFO). The partners commissioned two consultants reports:
  - a Business case
  - an Implementation and Operating Plan
- ❖ The consultants proposed a joint Canada-Ontario centre focused on forest & aquatic invasive pest management, prevention, communication and research requiring a commitment of \$90.6M



*Natural. Valued. Protected.*

## BACKGROUND (continued)

- ❖ Following through on a 2007 election platform commitment, the 2008 Ontario Budget committed \$15 million over four years (calendarized as \$1-million in 2008/09; \$3-million 2009/10; \$4-million 2010/11; and \$7-million 2011/12) to establish an Invasive Species Centre in Sault Ste. Marie
- ❖ A Working Group with representation from Ontario and federal departments/agencies with an invasive species mandate (CFIA, DFO, CFS & EC) developed a “Framework Document” outlining the purpose, scope and functions of an Invasive Species Centre
- ❖ The “Framework Document” was used as the basis for an MOU that will lead to a legal agreement and commitment of resources
- ❖ At the federal level, the Canadian Forest Service also secured \$9 million of federal infrastructure funding to support the construction of the Invasive Species Centre, which will be housed in an existing building at the Great Lakes Forestry Centre

*Natural. Valued. Protected.*

## SCOPE

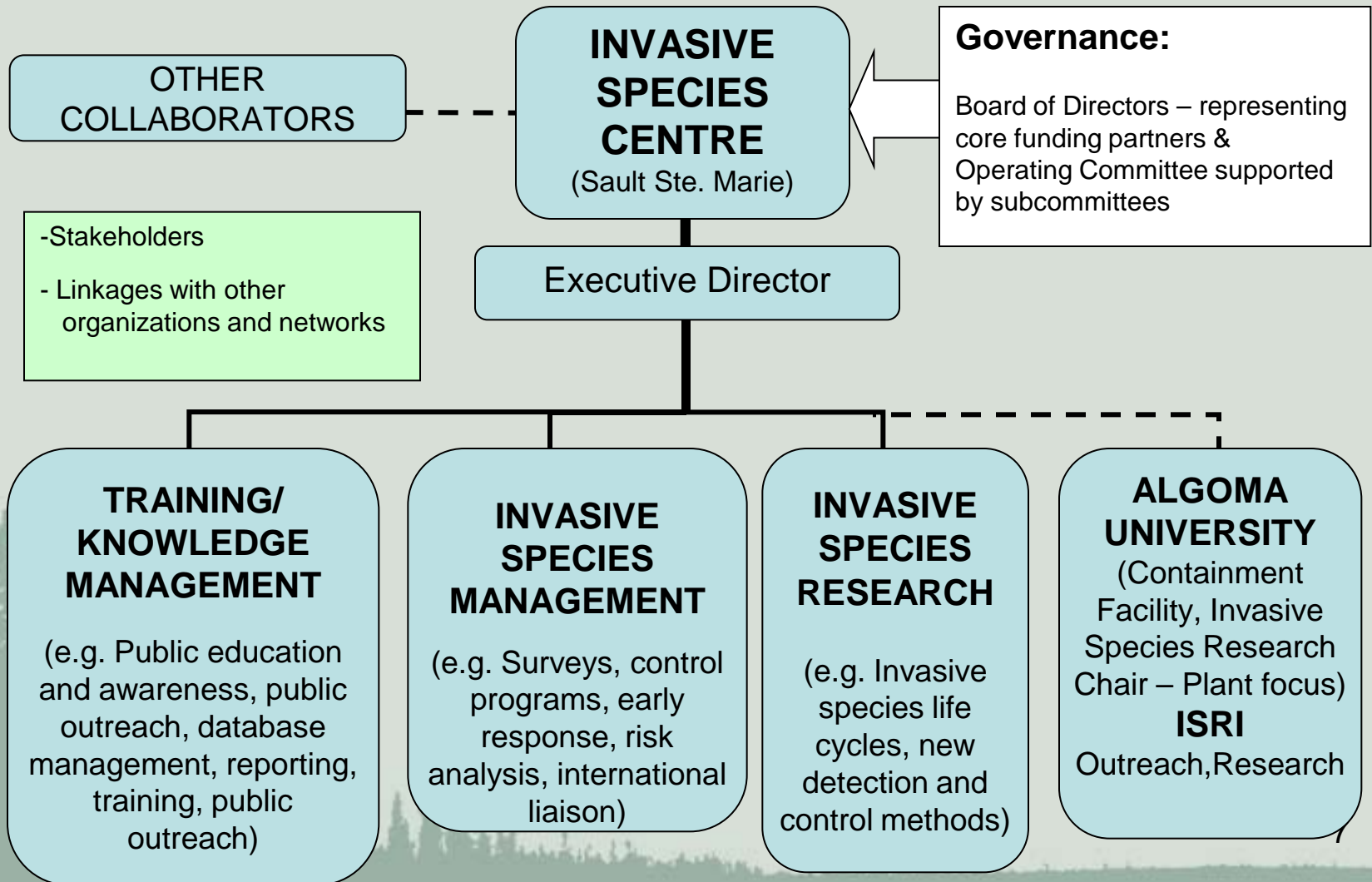
- ❖ Located at Sault Ste. Marie
- ❖ A mandate focused on invasive forest, plant (not agricultural) and aquatic invasive species (fresh water)
- ❖ Regional, focusing on Ontario and the Great Lakes with linkages to adjacent provinces and the Great Lake states

***As the Centre matures its scope may expand regionally, nationally and even internationally.***

- ❖ Respects legislative and jurisdictional mandates
- ❖ Link to and support the strategic goals and challenges outlined in the national, sector, and provincial invasive species strategies
- ❖ The Centre will support federal and provincial mandates by:
  - ✓ performing a coordination role
  - ✓ facilitating collaboration and capturing efficiencies for partners and
  - ✓ building on existing partnerships and focusing on gaps

*Natural. Valued. Protected.*

## PROPOSED STRUCTURE



*Natural. Valued. Protected.*

## Training/Knowledge Management

- ❖ A platform for coordination and collaboration in the areas of data management, training and public awareness
- ✓ House a database and collect available information from within and outside Canada to ensure that partners have the best available information for decision making
- ✓ Develop and implement common standards for training and data collection management, delivery will focus on training the trainer

*Natural. Valued. Protected.*

## Prevention and Invasive Pest Management

- ❖ Support and complement the partner's efforts in the areas of prevention and invasive pest management through cooperation, collaboration and coordination

### POTENTIAL CAPABILITIES

- ✓ Rapid response (using centre and/or partner staff/resources)
- ✓ Survey and data collection (using centre and/or partner staff/resources)
- ✓ A decision making framework to bring partners together to develop management plans/strategies
- ✓ Risk analysis support
- ✓ An invasive species data base
- ✓ Delivery of management/control programs on behalf of a partner(s)

*Natural. Valued. Protected.*

## Research

- ❖ A PLATFORM FOR COORDINATION
  - ✓ Multi-agency - partners will identify common needs, set research priorities, collaborate and promote efficiencies
  - ✓ Use a variety of approaches - in house research staff, partner's research capabilities and/or outside resources (academia, consultants, etc.)
  - ✓ Research programs will focus on biological sciences but may expand to include areas of socio-economic research and policy

*Natural. Valued. Protected.*

## MNR'S ISC FINANCIAL COMMITMENT

- ✓ Proof-of-concept projects - \$610,000 (21 projects will result in the leverage of resources totalling \$3,012,125)
- ✓ MNR has committed to support the Algoma University initiative by providing \$800,000 for an Invasive Species Research Chair - 5 yr term (leveraging research funds from sources not available to MNR and its partners and a potential investment of \$22M for a containment facility)
- ✓ Design and construction of the Invasive Species Centre of up to \$1,600,000 (leveraging \$9,000,000 in federal infrastructure funding)
- ✓ A portion (yet to be determined) of future staffing and operating costs of the Invasive Species Centre.

*Natural. Valued. Protected.*

## Next Steps

- ❖ Completion of MOU to establish a formal partnership between Ontario and the federal agencies/departments that have an invasive species mandate
- ❖ Establishment of the legal entity and appointment of a “Board of Directors” for the Invasive Species Centre
- ❖ Completion of Partnership Agreement/commitment of resources
- ❖ Establish a strategic and operating plan for the Invasive Species Centre
- ❖ Continue to build partnerships and secure funding

*Natural. Valued. Protected.*

# Questions

Al.king@ontario.ca

